

VANDAL-PROOF RANGE



SLUN 70P

Vandal-proof multifunctional washbasin

Innovative stainless steel vandal-proof multifunctional washbasin with integrated piezo system. One gentle push on the piezo button starts the soap, then the water and finally the hand dryer. Refilling the soap is simply carried out through the service hatch. Parameter adjustment easily using by the remote control SLD 07. And thanks to recessed installation, the washbasin is resistant to destruction, making it suitable for public rest areas, sports grounds, shopping centres, petrol stations and other public spaces.





SLPN 07C / SLZN 13



SLSN 02PT

VANDAL-PROOF STAINLESS STEEL WASHBASINS AND TROUGHS



VANDAL-PROOF STAINLESS STEEL WALL-HUNG CONICAL WASHBASIN, Ø 320 MM

SLUN 22M 83226

- stainless steel waste tube and M10 screws included, brushed finish
- without a tap hole (could be made to order)
- filled with expanded polyurethane
- rear assembling by screws (M10, length 190 mm) from the service room



VANDAL-PROOF STAINLESS STEEL WALL-HUNG CONICAL WASHBASIN, Ø 320 MM

SLUN 58 93580

- siphon and the mounting set included, brushed finish
- mounting over the service hatch and special screws
- without a tap hole (could be made to order)



VANDAL-PROOF STAINLESS STEEL WALL-HUNG CONICAL WASHBASIN, Ø 360 MM

SLUN 59 93590

- siphon and the mounting set included, brushed finish
- mounting over the service hatch and special screws
- without a tap hole (could be made to order)



VANDAL-PROOF STAINLESS STEEL WASHBASIN, Ø 300 MM

SLUN 69 73690

- siphon and the mounting set included, brushed finish
- without a tap hole (could be made to order)



STAINLESS STEEL RECESSED WASHBASIN, Ø 385 MM

SLUN 34 93340

- siphon and overflow set included
- assembling by glue, brushed finish



Detail of piezo button with spout
Anti-suicidal

VANDAL-PROOF STAINLESS STEEL PIEZO WALL-MOUNTED WASHBASIN

SLUN 71P	93717	for cold or premixed water, 24 V DC
SLUN 71PB	73716	for cold or premixed water, battery operated 6 V
SLUN 72P	93727	for cold and hot water, 24 V DC
SLUN 72PB	73726	for cold and hot water, battery operated 6 V
SLUN 72PT	73727	with thermostatic valve, 24 V DC
SLUN 72PTB	73728	with thermostatic valve, battery operated 6 V

- spout "Anti-suicidal", siphon and mounting set included, brushed finish
- assembling through the service hatch



Detail of electronics with spout
Anti-suicidal

VANDAL-PROOF STAINLESS STEEL AUTOMATIC WALL-MOUNTED WASHBASIN

SLUN 71E	93711	for cold or premixed water, 24 V DC
SLUN 71EB	93712	for cold or premixed water, battery operated 6 V
SLUN 72E	93721	for cold and hot water, 24 V DC
SLUN 72EB	93722	for cold and hot water, battery operated 6 V
SLUN 72ET	93723	with thermostatic valve, 24 V DC
SLUN 72ETB	93724	with thermostatic valve, battery operated 6 V

- spout "Anti-suicidal", siphon and mounting set included, brushed finish
- assembling through the service hatch



SLUN 72P / SLZN 30 / SLZN 21Z / SLZN 62Z



STAINLESS STEEL TROUGH WITHOUT APRON

SLUN 10	93100	AISI - 304, length 1250 mm
SLUN 10L	73103	AISI - 316L, length 1250 mm
SLUN 10C	93101	AISI - 304, length 1900 mm
SLUN 10D	93102	AISI - 304, length 2500 mm
SLUN 10F	93103	AISI - 304, length 3000 mm

- siphon and the mounting set included, brushed finish
- different lengths and tap holes could be made to order
- siphon hole is standardly on the right side (could be changed to order)



STAINLESS STEEL TROUGH WITH APRON

SLUN 10P	93107	AISI - 304, length 1250 mm
SLUN 10PL	73104	AISI - 316L, length 1250 mm

- siphon and the mounting set included, brushed finish
- different lengths and tap holes could be made to order
- siphon hole is standardly on the right side (could be changed to order)



STAINLESS STEEL VANDAL-PROOF TROUGH WITH APRON

SLUN 10PA	73109	AISI - 304, length 1250 mm
------------------	--------------	----------------------------

- siphon and the mounting set included, brushed finish
- assembling through two service hatches
- different lengths and tap holes could be made to order
- siphon hole is standardly on the right side (could be changed to order)
- could be made to order from stainless steel AISI - 316L



SUPPORTIVE STAINLESS STEEL BRACKET

SLZN 81	85810	for SLUN 10, AISI - 304
SLZN 81L	85811	for SLUN 10L, AISI - 316L

- supportive stainless steel bracket for longer or atypical troughs SLUN 10
- ensures the safety and strength of the trough



Detail of electronics with stainless steel spout

VANDAL-PROOF STAINLESS STEEL TROUGH

SLUN 50EA	93502	for cold and hot water, two integrated infra-red electronics, length 1250 mm, 24 V DC
------------------	--------------	---

- vandal-proof stainless steel spouts and sensing heads
- siphon included, brushed finish
- assembling through two service hatches
- different lengths could be made to order
- siphon hole is standardly on the left side (could be changed to order)
- could be made to order from stainless steel AISI - 316L



STAINLESS STEEL TROUGH



Detail of electronics with stainless steel spout

SLUN 50E	93501	for cold and hot water, two integrated infra-red electronics, length 1250 mm, 24 V DC
SLUN 51E	93511	for cold and hot water, three integrated infra-red electronics, length 1900 mm, 24 V DC
SLUN 52E	93521	for cold and hot water, four integrated infra-red electronics, length 2500 mm, 24 V DC
SLUN 53E	93531	for cold and hot water, five integrated infra-red electronics, length 3000 mm, 24 V DC
SLUN 50ET	93503	with thermostatic valve, two integrated infra-red electronics, length 1250 mm, 24 V DC
SLUN 51ET	93513	with thermostatic valve, three integrated infra-red electronics, length 1900 mm, 24 V DC
SLUN 52ET	93523	with thermostatic valve, four integrated infra-red electronics, length 2500 mm, 24 V DC
SLUN 53ET	93533	with thermostatic valve, five integrated infra-red electronics, length 3000 mm, 24 V DC

- vandal-proof stainless steel spouts and sensing heads
- siphon included, brushed finish
- different lengths could be made to order
- siphon hole is standardly on the left side (could be changed to order)
- could be made to order from stainless steel AISI - 316L



STAINLESS STEEL TROUGH



Detail of piezo button with stainless steel spout

SLUN 50P	93506	for cold and hot water, two integrated piezo electronics, length 1250 mm, 24 V DC
SLUN 51P	93515	for cold and hot water, three integrated piezo electronics, length 1900 mm, 24 V DC
SLUN 52P	93524	for cold and hot water, four integrated piezo electronics, length 2500 mm, 24 V DC
SLUN 53P	93534	for cold and hot water, five integrated piezo electronics, length 3000 mm, 24 V DC
SLUN 50PT	93504	with thermostatic valve, two integrated piezo electronics, length 1250 mm, 24 V DC
SLUN 51PT	93514	with thermostatic valve, three integrated piezo electronics, length 1900 mm, 24 V DC
SLUN 52PT	93525	with thermostatic valve, four integrated piezo electronics, length 2500 mm, 24 V DC
SLUN 53PT	93535	with thermostatic valve, five integrated piezo electronics, length 3000 mm, 24 V DC

- vandal-proof stainless steel spouts and sensing heads
- siphon included, brushed finish
- different lengths could be made to order
- siphon hole is standardly on the left side (could be changed to order)
- could be made to order from stainless steel AISI - 316L





Detail of piezo button with stainless steel spout

VANDAL-PROOF STAINLESS STEEL TROUGH

SLUN 50PA 93505 for cold and hot water, two integrated piezo electronics, length 1250 mm, 24 V DC

- vandal-proof stainless steel spouts
- siphon included, brushed finish
- assembling through two service hatches
- different lengths could be made to order
- siphon hole is standardly on the left side (could be changed to order)
- could be made to order from stainless steel AISI - 316L



Detail of electronics with stainless steel spout

VANDAL-PROOF STAINLESS STEEL WALL HUNG TROUGH

SLUN 80EA 93802 for cold and hot water, two integrated infra-red electronics, length 1250 mm, 24 V DC

- vandal-proof stainless steel spouts and sensing heads
- siphon included, brushed finish
- assembling through two service hatches
- different lengths could be made to order
- siphon hole is standardly on the left side (could be changed to order)
- could be made to order from stainless steel AISI - 316L



Detail of electronics with stainless steel spout

STAINLESS STEEL WALL HUNG TROUGH

- SLUN 80E 93801** for cold and hot water, two integrated infra-red electronics, length 1250 mm, 24 V DC
- SLUN 81E 93811** for cold and hot water, three integrated infra-red electronics, length 1900 mm, 24 V DC
- SLUN 82E 93821** for cold and hot water, four integrated infra-red electronics, length 2500 mm, 24 V DC
- SLUN 83E 93831** for cold and hot water, five integrated infra-red electronics, length 3000 mm, 24 V DC
- SLUN 80ET 93803** with thermostatic valve, two integrated infra-red electronics, length 1250 mm, 24 V DC
- SLUN 81ET 93813** with thermostatic valve, three integrated infra-red electronics, length 1900 mm, 24 V DC
- SLUN 82ET 93823** with thermostatic valve, four integrated infra-red electronics, length 2500 mm, 24 V DC
- SLUN 83ET 93833** with thermostatic valve, five integrated infra-red electronics, length 3000 mm, 24 V DC

- vandal-proof stainless steel spouts and sensing heads
- siphon included, brushed finish
- different lengths could be made to order
- siphon hole is standardly on the left side (could be changed to order)
- could be made to order from stainless steel AISI - 316L



STAINLESS STEEL WALL HUNG TROUGH

- SLUN 80P 93804** for cold and hot water, two integrated piezo electronics, length 1250 mm, 24 V DC
- SLUN 81P 93814** for cold and hot water, three integrated piezo electronics, length 1900 mm, 24 V DC
- SLUN 82P 93824** for cold and hot water, four integrated piezo electronics, length 2500 mm, 24 V DC
- SLUN 83P 93834** for cold and hot water, five integrated piezo electronics, length 3000 mm, 24 V DC
- SLUN 80PT 93805** with thermostatic valve, two integrated piezo electronics, length 1250 mm, 24 V DC
- SLUN 81PT 93815** with thermostatic valve, three integrated piezo electronics, length 1900 mm, 24 V DC
- SLUN 82PT 93825** with thermostatic valve, four integrated piezo electronics, length 2500 mm, 24 V DC
- SLUN 83PT 93835** with thermostatic valve, five integrated piezo electronics, length 3000 mm, 24 V DC

- vandal-proof stainless steel spouts and sensing heads
- siphon included, brushed finish
- different lengths could be made to order
- siphon hole is standardly on the left side (could be changed to order)
- could be made to order from stainless steel AISI - 316L



Detail of piezo button with stainless steel spout



SLUN 56 / SLU 04P17 / SLZN 71E / SLZN 20X / SLZN 23X / SLZN 27



Detail of piezo button with stainless steel spout

VANDAL-PROOF STAINLESS STEEL WALL HUNG TROUGH

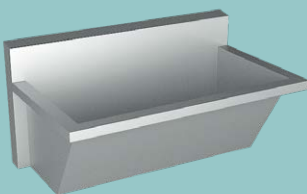
SLUN 80PA 93800 for cold and hot water, two integrated piezo electronics, length 1250 mm, 24 V DC

- vandal-proof stainless steel spouts and sensing heads
- siphon included, brushed finish
- assembling through two service hatches
- different lengths could be made to order
- siphon hole is standardly on the left side (could be changed to order)
- could be made to order from stainless steel AISI - 316L



STAINLESS STEEL TROUGH FOR HOSPITALS

SLUN 54	93540	AISI - 304, length 750 mm
SLUN 54L	93541	AISI - 316L, length 750 mm
SLUN 55	93550	AISI - 304, length 1500 mm
SLUN 55L	93551	AISI - 316L, length 1500 mm
SLUN 56	93560	AISI - 304, length 2250 mm
SLUN 56L	93561	AISI - 316L, length 2250 mm



- siphon and the mounting set included, brushed finish
- different lengths could be made to order
- siphon hole is standardly on the right side (could be changed to order)





VANDAL-PROOF STAINLESS STEEL PIEZO MULTIFUNCTIONAL WASHBASIN

SLUN 70H 73701 230 V AC

- automatic soap dispenser, automatic water spout and automatic hand dryer in one
- liquid soap refilling from the service room
- siphon and M10 screws included, brushed finish
- one central outlet for soap, water and hot air
- rear assembling by M10 screws from the service room



VANDAL-PROOF STAINLESS STEEL PIEZO MULTIFUNCTIONAL WASHBASIN

SLUN 70P 73703 230 V AC

- automatic soap dispenser, automatic water spout and automatic hand dryer in one
- liquid soap refilling from the service hatch
- siphon included, brushed finish
- one central outlet for soap, water and hot air
- assembling through the service hatch



SLUN 70P / SLKA 01W

VANDAL-PROOF WASHBASIN TAPS



PIEZO STAINLESS STEEL WASHBASIN TAP

SLU 91NP	66911	for cold or premixed water, 24 V DC
SLU 91NPB	66912	for cold or premixed water, battery operated 6 V
SLU 93NP	66931	for cold and hot water, 24 V DC
SLU 93NPB	66932	for cold and hot water, battery operated 6 V



PIEZO STAINLESS STEEL WASHBASIN MIXER

SLU 92NP	66921	24 V DC
SLU 92NPB	66922	battery operated 6 V



PIEZO STAINLESS STEEL WASHBASIN TAP, LONGER OUTLET ARM

SLU 91NPD	66913	for cold or premixed water, 24 V DC
SLU 91NPDB	66914	for cold or premixed water, battery operated 6 V
SLU 93NPD	66933	for cold and hot water, 24 V DC
SLU 93NPDB	66934	for cold and hot water, battery operated 6 V



PIEZO STAINLESS STEEL WASHBASIN MIXER, LONGER OUTLET ARM

SLU 92NPD	66923	24 V DC
SLU 92NPDB	66924	battery operated 6 V



STAINLESS STEEL WASHBASIN TAP

SLU 45	03450	for cold or premixed water, 24 V DC
SLU 45B	03455	for cold or premixed water, battery operated 6 V
SLU 46	03460	for cold and hot water, 24 V DC
SLU 46B	03465	for cold and hot water, battery operated 6 V



AUTOMATIC WASHBASIN TAP

SLU 56	03560	for cold or premixed water, 24 V DC
SLU 56B	03565	for cold or premixed water, battery operated 6 V
SLU 57	03570	for cold and hot water, 24 V DC
SLU 57B	03575	for cold and hot water, battery operated 6 V





AUTOMATIC WASHBASIN TAP

SLU 01N	23018	for cold or premixed water, 24 V DC
SLU 01NB	23019	for cold or premixed water, battery operated 6 V
SLU 01NH	33011	for non-pressure water heaters, 24 V DC
SLU 01NHB	33012	for non-pressure water heaters, battery operated 6 V



AUTOMATIC WASHBASIN MIXER

SLU 02N	23028	for cold and hot water, 24 V DC
SLU 02NB	23029	for cold and hot water, battery operated 6 V
SLU 02T	13026	with thermostatic valve, 24 V DC
SLU 02BT	13023	with thermostatic valve, battery operated 6 V



WALL-MOUNTED PIEZO TAP

SLU 04P17	53041	spout of 170 mm, 24 V DC
SLU 04P17B	53043	spout of 170 mm, battery operated 6 V
SLU 04P25	53042	spout of 250 mm, 24 V DC
SLU 04P25B	53044	spout of 250 mm, battery operated 6 V



PIEZO WALL-MOUNTED WASHBASIN TAP WITH THERMOSTATIC VALVE AND SPECIAL „ANTI-SUICIDAL“ SPOUT

SLU 09PTB	13091	6 V DC
-----------	-------	--------



AUTOMATIC WALL-MOUNTED WASHBASIN TAP FOR COLD OR PREMIXED WATER WITH A VANDAL-PROOF COVER AND „ANTI-SUICIDAL“ SPOUT

SLU 44P	43449	24 V DC
SLU 44PB	64441	battery operated 6 V

- special vandal-proof stainless steel cover, thickness 3 mm, safety screws



AUTOMATIC WALL-MOUNTED TAP FOR HOT AND COLD WATER WITH A VANDAL-PROOF COVER AND „ANTI-SUICIDAL“ SPOUT

SLU 44PP	64442	24 V DC
----------	-------	---------

- mutual blocking of the piezo buttons

- special vandal-proof stainless steel cover, thickness 3 mm, safety screws





SLUN 58 / SLU 44PP / SLZN 56Z / SLZN 63Z / SLZN 62Z / SLZN 30

VANDAL-PROOF STAINLESS STEEL TOILETS



STAINLESS STEEL FLOOR-STANDING TOILET

SLWN 03 94030

- without a cover seat, siphon and the mounting set included, brushed finish
- rear assembling by a mounting plate
- cover seat hole plugs included
- filled with expanded polyurethane



STAINLESS STEEL HANGING TOILET

SLWN 04 94040

- without a cover seat, siphon and the mounting set included, brushed finish
- rear assembling by a mounting plate
- cover seat hole plugs included
- filled with expanded polyurethane



VANDAL-PROOF STAINLESS STEEL FLOOR-STANDING TOILET

SLWN 05 94050

- without a cover seat, siphon and M10 screws included, brushed finish
- rear assembling by M10 screws from the service room
- filled with expanded polyurethane



VANDAL-PROOF STAINLESS STEEL HANGING TOILET

SLWN 12 94120

- without a cover seat, siphon included, brushed finish
- rear assembling by M12 screws from the service room
- filled with expanded polyurethane



VANDAL-PROOF STAINLESS STEEL FLOOR-STANDING TOILET

SLWN 14 94140

- without a cover seat, siphon included, brushed finish
- rear assembling through the service hatch
- cover seat hole plugs included
- waste outlet into the floor or wall
- filled with expanded polyurethane



STAINLESS STEEL FLOOR-STANDING TOILET

SLWN 30 94302

- without a cover seat, siphon included, brushed finish
- assembling through the service hatch
- waste outlet into the floor or wall
- filled with expanded polyurethane





STAINLESS STEEL TOILET WITH A TANK (BOTTOM FILLING)

SLWN 15 94150

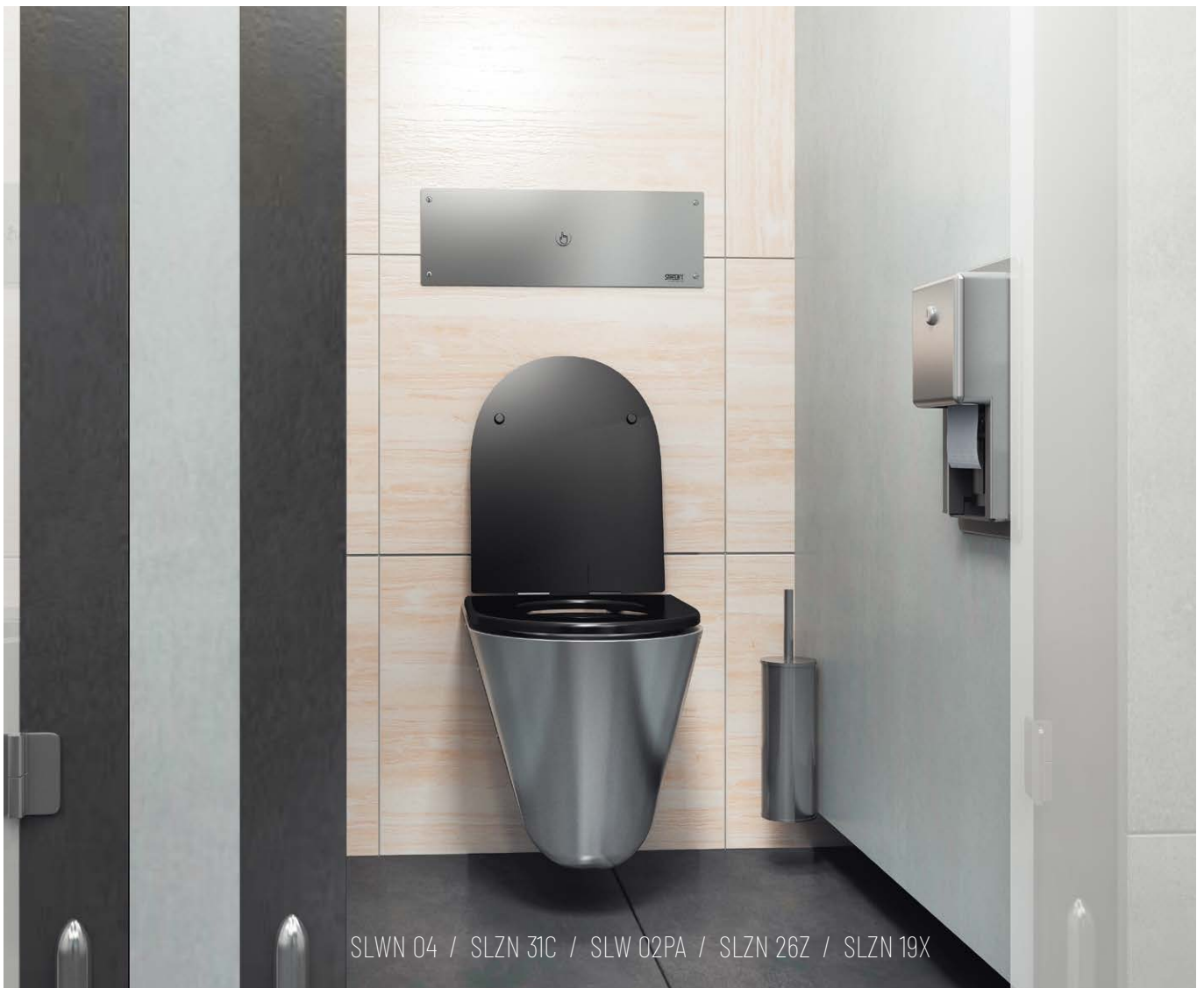
- manual flushing 4/6 l
- without a cover seat, siphon included, brushed finish
- assembling through the service hatch
- cover seat hole plugs included
- waste outlet into the floor or wall
- filled with expanded polyurethane



PLASTIC BLACK TOILET COVER SEAT

SLZN 31C 95313 with cover
SLZN 31A 95315 without cover

- stainless steel pants
- hole dimensions 225 x 280 mm
- outer width 355 mm
- distance of front edge from screw axis 425 mm
- destined for SLWN 03, SLWN 04, SLWN 11, SLWN 13, SLWN 14, SLWN 15, SLWN 16



SLWN 04 / SLZN 31C / SLW 02PA / SLZN 26Z / SLZN 19X

STAINLESS STEEL SQUATTING PAN



STAINLESS STEEL SQUATTING PAN

SLWN 07 94070

- two flushing heads and stainless steel siphon included, brushed finish



SET FOR SLWN 07 FOR CONNECTING TO AUTOMATIC FLUSHING UNIT SLW 01XX

SLA 27 06270

VANDAL-PROOF TOILET FLUSHING UNITS



TOILET PIEZO FLUSHING UNIT FOR PRESSURED WATER WITH VANDAL-PROOF COVER

SLW 01PA 14016 24 V DC

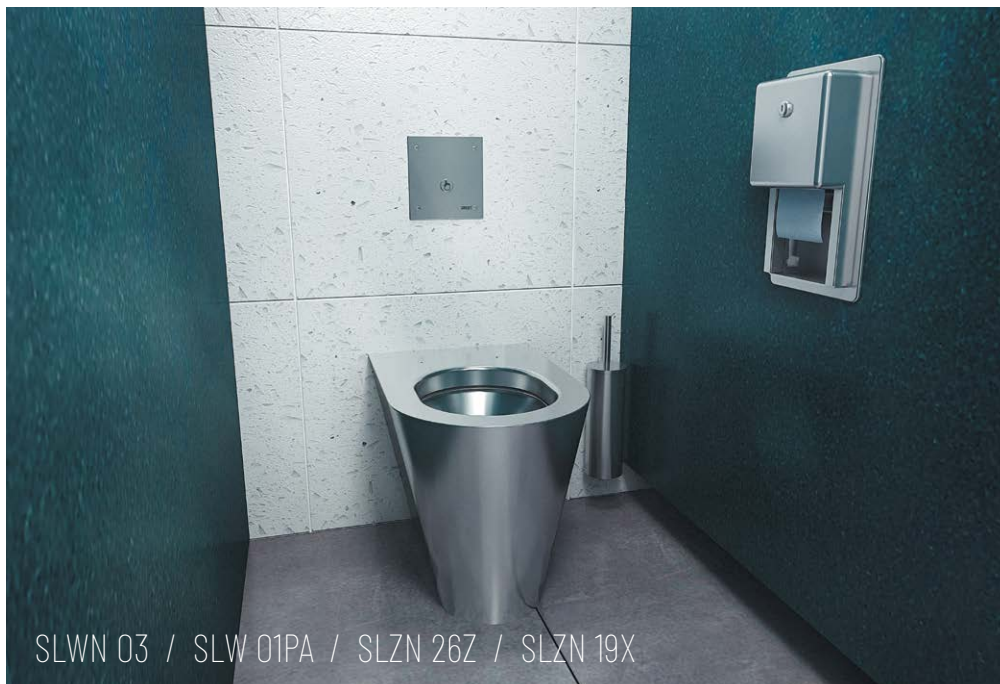
- special vandal-proof stainless steel cover, thickness 3 mm, safety screws



PIEZO TOILET FLUSHING UNIT WITH VANDAL-PROOF COVER, INCLUDING THE FRAME SLR 21

SLW 02PA 14026 24 V DC

- special vandal-proof stainless steel cover, thickness 3 mm, safety screws



SLWN 03 / SLW 01PA / SLZN 26Z / SLZN 19X

VANDAL-PROOF STAINLESS STEEL COMBINATION UNITS



VANDAL-PROOF CORNER COMBINATION UNIT

SLWN 08P	94082	floor standing toilet on the right side
SLWN 08L	94081	floor standing toilet on the left side

- without a cover seat, with push buttons
- siphon and the mounting set included, brushed finish
- **rear assembling by M10 screws from the service room**
- filled with expanded polyurethane



VANDAL-PROOF PIEZO CORNER COMBINATION UNIT

SLWN 08PP	94085	floor standing toilet on the right side, 24 V DC
SLWN 08LP	94086	floor standing toilet on the left side, 24 V DC

- without a cover seat, with piezo button for WC and piezo button for washbasin spout
- siphon and the mounting set included, brushed finish
- **rear assembling by M10 screws from the service room**
- filled with expanded polyurethane



VANDAL-PROOF CORNER COMBINATION UNIT

SLWN 18P	94182	floor standing toilet on the right side
SLWN 18L	94181	floor standing toilet on the left side

- without a cover seat, with push buttons
- siphon and the mounting set included, brushed finish
- assembling through the service hatch
- filled with expanded polyurethane



VANDAL-PROOF PIEZO CORNER COMBINATION UNIT

SLWN 18PP	94185	floor standing toilet on the right side, 24 V DC
SLWN 18LP	94186	floor standing toilet on the left side, 24 V DC

- without a cover seat, with piezo button for WC and piezo button for washbasin spout
- siphon and the mounting set included, brushed finish
- assembling through the service hatch
- filled with expanded polyurethane



VANDAL-PROOF COMBINATION UNIT

SLWN 28	94282	floor standing toilet
---------	-------	-----------------------

- without a cover seat, with push buttons
- siphon and the mounting set included, brushed finish
- **rear assembling by M10 screws from the service room**
- filled with expanded polyurethane





VANDAL-PROOF PIEZO COMBINATION UNIT

SLWN 28P 94283 floor standing toilet, 24 V DC

- without a cover seat, with piezo button for WC and piezo button for washbasin spout
- siphon and the mounting set included, brushed finish
- **rear assembling by M10 screws from the service room**
- filled with expanded polyurethane



VANDAL-PROOF COMBINATION UNIT

SLWN 38 94382 floor standing toilet

- without a cover seat, with push buttons
- siphon and the mounting set included, brushed finish
- assembling through the service hatch
- filled with expanded polyurethane



VANDAL-PROOF PIEZO COMBINATION UNIT

SLWN 38P 94383 floor standing toilet, 24 V DC

- without a cover seat, with piezo button for WC and piezo button for washbasin spout
- siphon and the mounting set included, brushed finish
- assembling through the service hatch
- filled with expanded polyurethane



SLWN 18PP

VANDAL-PROOF STAINLESS STEEL URINALS AND URINAL TROUGHS



STAINLESS STEEL URINAL

SLPN 07	91070	
SLPN 07C	91073	with integrated thermic flushing unit, 24 V DC
SLPN 07CZ	91075	with integrated thermic flushing unit and integrated power supply, 230 V AC
SLPN 07CB	91074	with integrated thermic flushing unit, battery operated 6 V

- siphon and the mounting set included, brushed finish
- assembling through the service hatch with special screws (TORX)



VANDAL-PROOF STAINLESS STEEL URINAL

SLPN 06	91060	
----------------	--------------	--

- siphon and the mounting set included, brushed finish
- rear assembling by M10 screws from the service room



STAINLESS STEEL URINAL

SLPN 09	91090	
SLPN 09C	91093	with integrated thermic flushing unit, 24 V DC
SLPN 09CZ	91095	with integrated thermic flushing unit and integrated power supply, 230 V AC
SLPN 09CB	91094	with integrated thermic flushing unit, battery operated 6 V

- siphon and the mounting set included, brushed finish
- assembling through the service hatch with special screws (TORX)



STAINLESS STEEL FLOOR-STANDING URINAL TROUGH

SLPN 02Z	91026	length 600 mm
SLPN 03Z	91036	length 1200 mm
SLPN 04Z	91046	length 1800 mm
SLPN 05Z	91056	length 2400 mm

- flushing pipe
- siphon and the mounting set included, brushed finish
- different lengths could be made to order

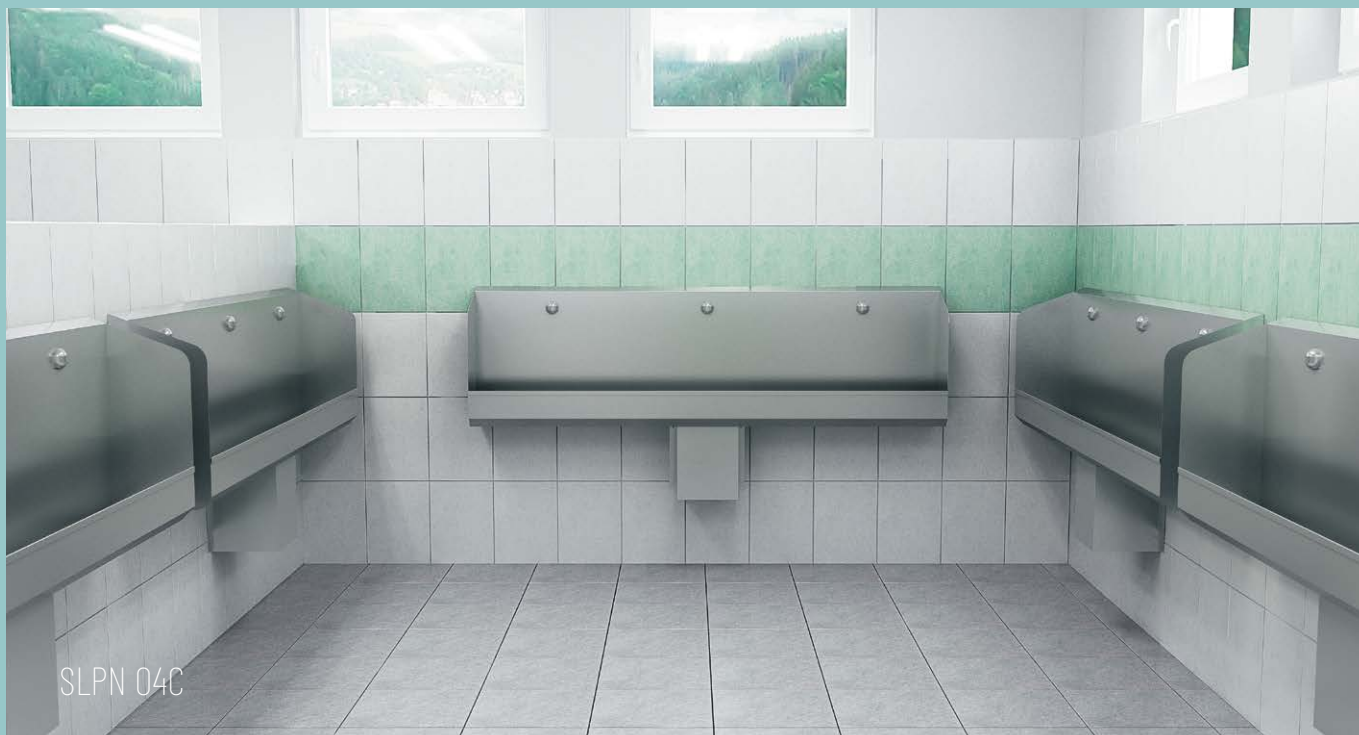


STAINLESS STEEL URINAL TROUGH

SLPN 02	91020	without electronics, one flushing head, length 600 mm
SLPN 02C	91023	with integrated thermic flushing unit, length 600 mm, 24V DC
SLPN 02CB	91024	with integrated thermic flushing unit, length 600 mm, battery operated 6 V

- siphon and the mounting set included, brushed finish
- different lengths could be made to order





STAINLESS STEEL URINAL TROUGH



- SLPN 03** **91030** without electronics, two flushing heads, length 1200 mm
- SLPN 03C** **91033** with integrated thermic flushing unit, length 1200 mm, 24 V DC
- SLPN 03CB** **91034** with integrated thermic flushing unit, length 1200 mm, battery operated 6 V

- siphon and the mounting set included, brushed finish
 - different lengths could be made to order



STAINLESS STEEL URINAL TROUGH



- SLPN 04** **91040** without electronics, three flushing heads, length 1800 mm
- SLPN 04C** **91043** with integrated thermic flushing unit, length 1800 mm, 24 V DC
- SLPN 04CB** **91044** with integrated thermic flushing unit, length 1800 mm, battery operated 6 V

- siphon and the mounting set included, brushed finish
 - different lengths could be made to order



STAINLESS STEEL URINAL TROUGH WITHOUT ELECTRONICS, FOUR FLUSHING HEADS



- SLPN 05** **91050** length 2400 mm

- siphon and the mounting set included, brushed finish
 - different lengths could be made to order



VANDAL-PROOF STAINLESS STEEL URINAL FLUSHING UNITS



PIEZO URINAL FLUSHING UNIT

SLP 02PA 21022 with a vandal-proof cover, 24 V DC

- special vandal-proof stainless steel cover, thickness 3 mm, safety screws



TIME-CONTROLLED FLUSHING UNIT FOR URINAL TROUGHS SLPN 02(Z) - 05(Z)

SLP 01Z 01011 230 V AC



CLEANER'S SINKS



VANDAL-PROOF STAINLESS STEEL FLOOR STANDING CLEANER'S SINK WITH APRON

SLVN 03A 98037

- siphon and grating included, brushed finish

- waste output Ø 50 mm

- assembling through the service hatch

- dimensions 500 x 460 x 500 mm



STAINLESS STEEL WALL HUNG CLEANER'S SINK

SLVN 05 98050

- backsplash, siphon, grating, overflow and mounting set included, brushed finish

- waste output Ø 50 mm

- dimensions 430 x 320 x 536 mm



STAINLESS STEEL WALL HUNG CLEANER'S SINK

SLVN 06 98060

- backsplash, siphon, grating, overflow and mounting set included, brushed finish

- waste output Ø 50 mm

- dimensions 570 x 404 x 410 mm

VANDAL-PROOF STAINLESS STEEL SHOWER CONTROLS AND SHOWER PANELS



PIEZO SHOWER CONTROL FOR COLD OR PREMIXED WATER

SLS 01P	12012	24 V DC
SLS 01PB	12013	battery operated 6 V



PIEZO SHOWER CONTROL FOR COLD OR PREMIXED WATER

SLS 01PA	12016	with vandal-proof cover, 24 V DC
SLS 01PBA	12018	with vandal-proof cover, battery operated 6 V

- special vandal-proof stainless steel cover, thickness 3 mm, safety screws



PIEZO SHOWER CONTROL WITH MIXER

SLS 02P	12022	24 V DC
SLS 02PB	12023	battery operated 6 V



PIEZO SHOWER CONTROL WITH THERMOSTATIC MIXER

SLS 02PT	12024	24 V DC
SLS 02PTB	12025	battery operated 6 V



STAINLESS STEEL PIEZO SHOWER PANEL FOR COLD OR PREMIXED WATER

SLSN 01P	92018	24 V DC
SLSN 01PB	92019	battery operated 6 V

- could be made to order from stainless steel AISI - 316L



STAINLESS STEEL PIEZO SHOWER PANEL

SLSN 02P	92028	with a mixer, 24 V DC
SLSN 02PB	92029	with a mixer, battery operated 6 V
SLSN 02PT	82021	with a thermostatic mixer, 24 V DC
SLSN 02PTB	82022	with a thermostatic mixer, battery operated 6 V

- could be made to order from stainless steel AISI - 316L





SLS 01PA / SLA 39 / SLKN 04A / SLKA 01S

VANDAL-PROOF SHOWER HEADS



VANDAL-PROOF SHOWER HEAD WITH THE POSSIBILITY TO SET AN ANGLE OF WATER FLOW

SLA 03 06030

- water inlet 1/2"
- rate of flow 9 l/min (0,05 - 0,9 MPa)



SLA 39

SLA 40

VANDAL-PROOF SHOWER HEAD

SLA 39 06390

SLA 40 06400 with the possibility to set an angle of water flow

- water inlet 1/2"
- rate of flow 9 l/min (0,05 - 0,9 MPa)





VANDAL-PROOF SHOWER HEAD WITH POSSIBILITY TO SET AN ANGLE OF WATER FLOW

SLA 13 06130

- water inlet ½"
- rate of flow 18,5l/min (0,1 MPa)
- water flow limiters 6 l/min, 12 l/min are part of the delivery



VANDAL-PROOF SHOWER HEAD

SLA 14 06140

- water inlet ½"
- rate of flow 20l/min (0,1 MPa)
- water flow limiters 6 l/min, 12 l/min are part of the delivery



STAINLESS STEEL SHOWER TRAYS



STAINLESS STEEL SHOWER TRAY

SLSN 06 92060 700 x 700 mm

- siphon and cover included, brushed finish



STAINLESS STEEL SHOWER TRAY

SLSN 07 92070 800 x 800 mm

- siphon and cover included, brushed finish



STAINLESS STEEL SHOWER TRAY

SLSN 08 92080 900 x 900 mm

- siphon and cover included, brushed finish



STAINLESS STEEL SHOWER TRAY

SLSN 10 82100 1000 x 1000 mm

- siphon and cover included, brushed finish

STAINLESS STEEL BATHTUBS



STAINLESS STEEL BATHTUB

SLSN 09 92090 1700 x 800 x 460 mm

- siphon, brushed finish
- different dimensions could be made to order



STAINLESS STEEL BABY BATHTUB

SLSN 11 92110 700 x 400 mm

- siphon, brushed finish



VANDAL-PROOF STAINLESS STEEL ACCESSORIES



STAINLESS STEEL RECESSED HOLDER OF TOILET PAPER, BRUSHED

SLZN 26Z 95261

- mounted into the wall
- for two coils of toilet paper (max. Ø 135 mm)



STAINLESS STEEL RECESSED SUPPLY BIN FOR FOLDER OF PAPER TOWELS WITH A WASTE BIN, BRUSHED

SLZN 21Z 95211

- mounted into the wall
- dimensions 790 x 330 x 125 mm (on the wall)
- capacity of supply bin cca 600 paper towels
- waste bin volume 7,5 l



STAINLESS STEEL RECESSED SUPPLY BIN FOR A FOLDER OF PAPER TOWELS, BRUSHED

SLZN 56Z 95561

- mounted into the wall
- dimensions 435 x 328 x 122 mm
- capacity of supply bin cca 600 paper towels



STAINLESS STEEL RECESSED WASTE BIN, BRUSHED

SLZN 63Z 95631

- mounted into the wall
- dimensions 360 x 710 x 110 mm
- volume 10 l





RECESSED SOAP DISPENSER TO THE WALL, VOLUME 1,4 L, BRUSHED

SLZN 62Z 95621

- dimensions 152 x 260 x 105 mm



STAINLESS STEEL HOOK, VANDAL-PROOF, BRUSHED

SLZN 45 95450



STAINLESS STEEL HOOK, DIMENSIONS Ø 20 X 50 MM, BRUSHED

SLZN 46 95460



STAINLESS STEEL HOOK, DIMENSIONS Ø 20 X 100 MM, BRUSHED

SLZN 46D 85468



VANDAL-PROOF STAINLESS STEEL HOOK WITH "ANTI-SUICIDAL" SYSTEM, BRUSHED

SLZN 70 95700



STAINLESS STEEL WALL-MOUNTED TOILET BRUSH

SLZN 19 95190 polished

SLZN 19X 75196 brushed

- dimensions of stainless steel cover Ø 90 x 260 mm

- mounted on the wall or the floor



STAINLESS STEEL MIRROR

SLZN 27 95270 dimensions 500 x 400 x 7 mm

SLZN 30 95300 dimensions 600 x 400 x 7 mm

- different dimensions could be made to order



STAINLESS STEEL PICTOGRAMS



STAINLESS STEEL PICTOGRAMS

SLZN 44AA 75445 toilet men

SLZN 44AB 75444 toilet women

SLZN 44AC 75443 toilet for disabled

- dimensions 120 x 120 mm, brushed finish

- different types of pictograms could be made to order

- 3M self-sealing tape included



SLWN 11 / SLW 03PA / SLUN 47X / SLU 08L / SLZN 52 / SLZM 20X / SLZM 16X / SLZM 12X

RANGE FOR THE DISABLED AND PERSONS WITH LIMITED MOBILITY



STAINLESS STEEL WALL-HUNG WASHBASIN FOR DISABLED PEOPLE

SLUN 47 93470

SLUN 47X 93478

- siphon and the mounting set included, polished finish (SLUN 47), brushed finish (SLUN 47X)
- without a tap hole (could be made to order)



STAINLESS STEEL WALL-HUNG WASHBASIN FOR DISABLED PEOPLE

SLUN 66 93660

- siphon, overflow and the mounting set included, brushed finish
- without a tap hole (could be made to order)



AUTOMATIC WASHBASIN / SINK TAP

SLU 08L 13085 for cold and hot water, 24 V DC

SLU 08LB 13185 for cold and hot water, battery operated 6 V



AUTOMATIC WASHBASIN / SINK ELONGATED TAP

SLU 08LD 13087 for cold and hot water, 24 V DC

SLU 08LDB 13180 for cold and hot water, battery operated 6 V



STAINLESS STEEL HANGING TOILET FOR DISABLED PEOPLE

SLWN 11 94110

- without a cover seat, siphon included, brushed finish
- rear assembling by a mounting plate
- cover seat hole plugs included
- filled with expanded polyurethane



STAINLESS STEEL FLOOR STANDING TOILET FOR DISABLED PEOPLE

SLWN 13 94130

- without a cover seat, siphon included, brushed finish
- rear assembling through the service hatch
- cover seat hole plugs included
- waste outlet into the floor or wall
- filled with expanded polyurethane



STAINLESS STEEL TOILET FOR DISABLED PEOPLE WITH A TANK

SLWN 16 94160

- manual flushing 4/6 l
- without a cover seat, siphon included, brushed finish
- assembling through the service hatch
- cover seat hole plugs included
- waste outlet into the floor or wall
- filled with expanded polyurethane





PIEZO TOILET FLUSHING UNIT FOR PRESSURED WATER WITH VANDAL-PROOF COVER, WITH DISTANT CONTROL FOR DISABLED PEOPLE

SLW 03PA 14036 24 V DC

- special vandal-proof stainless steel cover, thickness 3 mm, safety screws



PIEZO TOILET FLUSHING UNIT WITH VANDAL-PROOF COVER, WITH DISTANT CONTROL FOR DISABLED PEOPLE, INCLUDING THE FRAME SLR 21

SLW 04PA 14046 24 V DC

- special vandal-proof stainless steel cover, thickness 3 mm, safety screws



STAINLESS STEEL FOLDING MIRROR FOR DISABLED PEOPLE

SLZN 52 95520 dimensions 600 x 400 x 75 mm

- possible to tilt the mirror smoothly, placing the handle on both sides of the mirror



STAINLESS STEEL MIRROR FOR DISABLED PEOPLE

SLZN 55 95550 dimensions 900 x 400 x 7 mm



STAINLESS STEEL/HPL SHOWER SEAT, WALL HUNG, FOLDING

SLZM 06N 49061 dimensions 560 x 395 mm, weight load resistance up to 270 kg



STAINLESS STEEL SHOWER SEAT, WALL HUNG, FOLDING

SLZM 06 49060 dimensions 460 x 462 mm, weight load resistance up to 150 kg, brushed finish



STAINLESS STEEL GRAB BARS



STAINLESS STEEL GRAB BAR UNIVERSAL, FIXED, LENGTH 385 MM

SLZM 10	49100	polished
SLZM 10X	49101	brushed



STAINLESS STEEL GRAB BAR UNIVERSAL, FIXED, LENGTH 537 MM

SLZM 11	49110	polished
SLZM 11X	49111	brushed



STAINLESS STEEL GRAB BAR UNIVERSAL, FIXED, LENGTH 690 MM

SLZM 12	49120	polished
SLZM 12X	49121	brushed



STAINLESS STEEL GRAB BAR, FIXED, LENGTH 600 MM

SLZM 13	49130	polished
SLZM 13X	49131	brushed



STAINLESS STEEL GRAB BAR, FIXED, LENGTH 800 MM

SLZM 14	49140	polished
SLZM 14X	49141	brushed



STAINLESS STEEL GRAB BAR, FOLDING, LENGTH 600 MM

SLZM 15	49150	polished
SLZM 15X	49151	brushed



STAINLESS STEEL GRAB BAR, FOLDING, LENGTH 800 MM

SLZM 16	49160	polished
SLZM 16X	49161	brushed





STAINLESS STEEL CORNER GRAB BAR, FIXED, DIMENSIONS 760 X 760 MM

SLZM 17 49170 polished
 SLZM 17X 49171 brushed



STAINLESS STEEL BATH GRAB BAR FIXED, RIGHT, DIMENSIONS 350 X 660 MM

SLZM 18 49180 polished
 SLZM 18X 49181 brushed



STAINLESS STEEL BATH GRAB BAR FIXED, LEFT, DIMENSIONS 350 X 660 MM

SLZM 19 49190 polished
 SLZM 19X 49191 brushed



STAINLESS STEEL GRAB BAR, FIXED, LENGTH 900 MM

SLZM 20 49200 polished
 SLZM 20X 49201 brushed



STAINLESS STEEL BATH GRAB BAR FIXED, DIMENSIONS 470 X 190 X 73 MM

SLZM 21 49210 polished
 SLZM 21X 49211 brushed





ANTI-MICROBIAL VINYL GRAB BARS



VINYL GRAB BAR UNIVERSAL, FIXED, LENGTH 385 MM, Ø 32 MM

SLZM 10VIN 49103 colour standard white, other colours for an extra charge



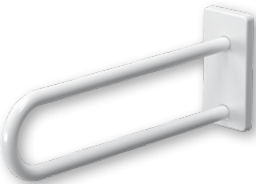
VINYL GRAB BAR UNIVERSAL, FIXED, LENGTH 537 MM, Ø 32 MM

SLZM 11VIN 49113 colour standard white, other colours for an extra charge



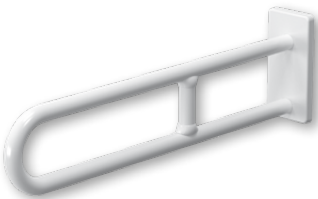
VINYL GRAB BAR UNIVERSAL, FIXED, LENGTH 690 MM, Ø 32 MM

SLZM 12VIN 49123 colour standard white, other colours for an extra charge



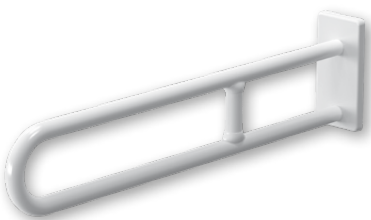
VINYL GRAB BAR, FIXED, LENGTH 600 MM, Ø 32 MM

SLZM 13VIN 49133 colour standard white, other colours for an extra charge



VINYL GRAB BAR, FIXED, LENGTH 800 MM, Ø 32 MM

SLZM 14VIN 49143 colour standard white, other colours for an extra charge



VINYL GRAB BAR, FIXED, LENGTH 900 MM, Ø 32 MM

SLZM 20VIN 49203 colour standard white, other colours for an extra charge



VINYL GRAB BAR, FOLDING, LENGTH 600 MM, Ø 32 MM

SLZM 15VIN 49153 colour standard white, other colours for an extra charge



VINYL GRAB BAR, FOLDING, LENGTH 800 MM, Ø 32 MM

SLZM 16VIN 49163 colour standard white, other colours for an extra charge





VINYL BATH GRAB BAR FIXED, RIGHT, DIMENSIONS 350 X 660 MM, Ø 32 MM

SLZM 18VIN 49183 colour standard white, other colours for an extra charge



VINYL BATH GRAB BAR FIXED, LEFT, DIMENSIONS 350 X 660 MM, Ø 32 MM

SLZM 19VIN 49183 colour standard white, other colours for an extra charge



VINYL CORNER GRAB BAR, FIXED, DIMENSIONS 760 X 760 MM, Ø 32 MM

SLZM 17VIN 49173 colour standard white, other colours for an extra charge



VINYL BATH GRAB BAR FIXED, DIMENSIONS 552 X 275 X 100 MM, Ø 32 MM

SLZM 21VIN 49213 colour standard white, other colours for an extra charge



VINYL SHOWER SEAT, WALL HUNG, FOLDING, DIMENSIONS 400 x 380 MM

SLZM 06VIN 49062 colour standard white, other colours for an extra charge



VINYL SHOWER STOOL, DIMENSIONS 380 x 380 x 430 MM

SLZM 30VIN 49300 colour standard white, other colours for an extra charge



SLZA 43A / SLZA 43B / SLZA 43S

Automatic devices with multiple payment methods

SLZA 43A Vandal-proof automatic device for door lock. After inserting the credit the door lock opens for adjusted time.

SLZA 43B Vandal-proof automatic device for single-phase appliance. After inserting the credit the device switches on the contactor of the single-phase appliance (e. g. washing machine, hair dryer, TV) for paid time.

SLZA 43S Vandal-proof automatic device for shower. After inserting the credit the device starts the water flow and the user can start or stop the water directly in the shower.



- possible delivery including euro key for free use by disabled and persons with limited mobility
- payment with coins, tokens, contactless payment cards, Google Pay, Apple Pay or RFID tokens
- parameter setting and communication with the electronics via the Sanela Control app (Bluetooth)
- material AISI-304, could be made to order from stainless steel AISI-316L

AUTOMATIC DEVICES, MULTIPLE PAYMENT METHODS



AUTOMATIC DEVICE

- SLZA 43A 88438 for 1 - 4 door locks, with multiple payment methods, 24 V DC
 SLZA 43B 89430 for 1 - 4 single-phase appliances, multiple payment methods, 24 V DC
 SLZA 43S 89432 for 1 - 4 showers, multiple payment methods, 24 V DC

- material AISI - 304, could be made to order from stainless steel AISI - 316L, brushed finish



RECESSED COIN AND TOKEN SHOWER TIMER

- SLZA 02NZ 88024 choice of shower by the machine, for 4 - 12 showers, 24 V DC
 SLZA 02LNZ 88020 choice of shower by the user, for 4 - 8 showers, 24 V DC

- mounted into the wall

- material AISI - 304, could be made to order from stainless steel AISI 316L, brushed finish



RECESSED COIN AND TOKEN SHOWER TIMER FOR ONE SHOWER

- SLZA 03NZ 88034 24 V DC

- mounted into the wall

- material AISI - 304, could be made to order from stainless steel AISI 316L



RECESSED COIN AND TOKEN MACHINE FOR DOOR OPENING WITH GSM MODULE

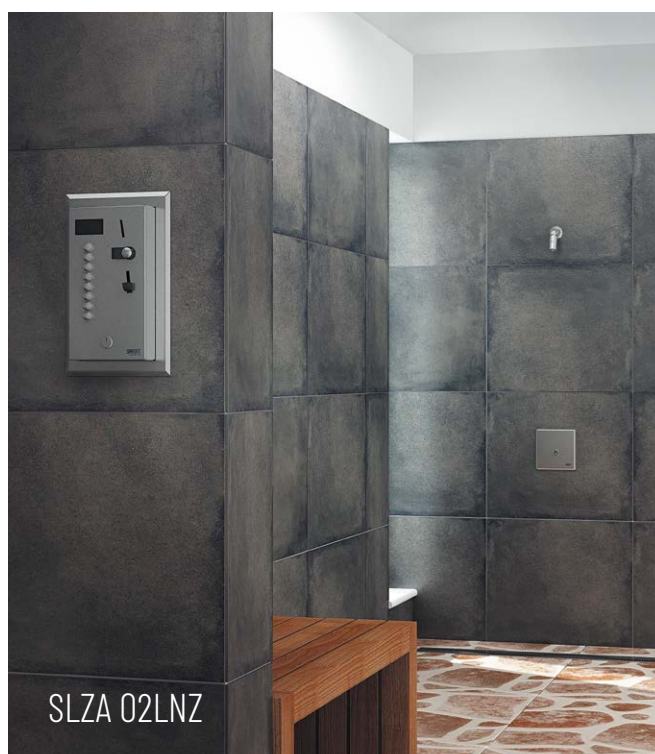
- SLZA 406VZ 88407 with euro key, 24 V DC

- mounted into the wall

- material AISI - 304, could be made to order from stainless steel AISI 316L



A COMPLETE RANGE OF AUTOMATIC DEVICES (COIN, CARD, RFID AND TOKEN) CAN BE FOUND AT WWW.SANELA.EU



SMART SANITARY SYSTEM

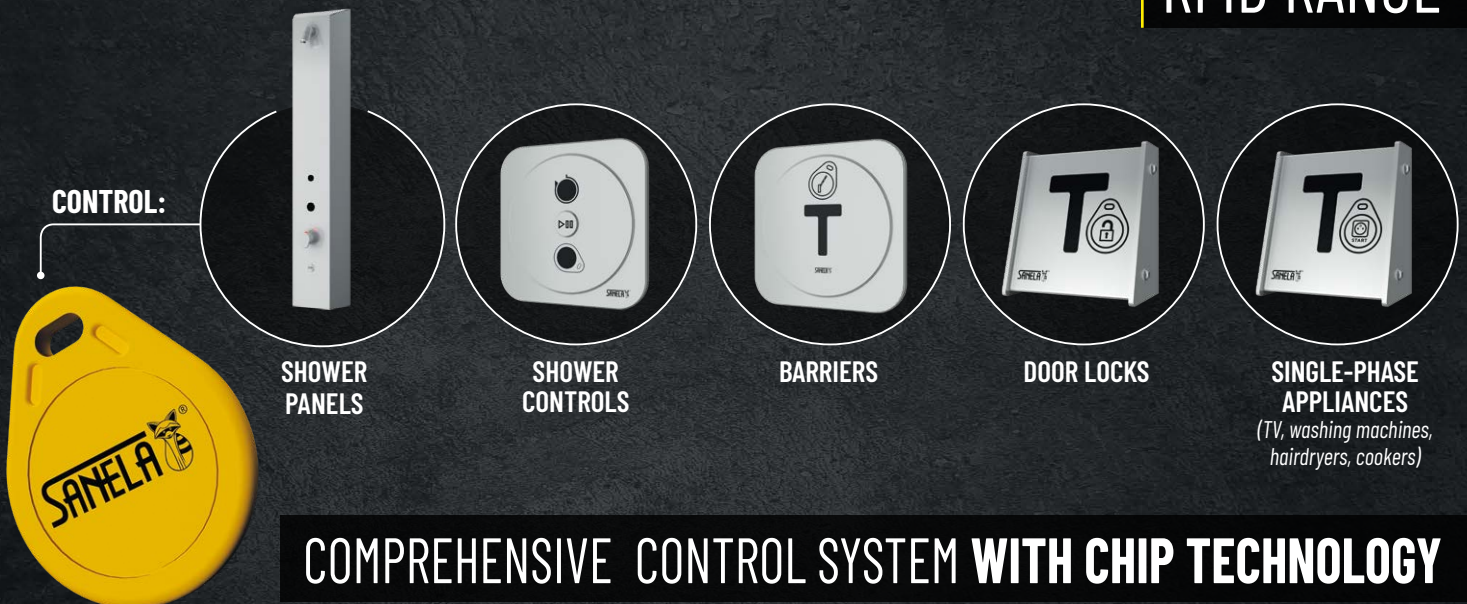


INTELLIGENT WATER AND ENERGY MANAGEMENT SYSTEM

BLUETOOTH SYSTEM



RFID RANGE



PICTOGRAMS



VANDAL-PROOF, HIGHLY RESISTANT TO WEAR AND MECHANICAL DAMAGE



PRODUCT SUITABLE FOR PRISONS AND PSYCHIATRIC HOSPITALS, MEET THE REQUIREMENTS OF HIGH RESISTANCE TO MECHANICAL DAMAGES AND MINIMIZE POSSIBILITY OF SELF-HARM OR SUICIDE OF USERS



PRODUCT THAT MEET THE STRICT REQUIREMENTS FOR DISABLED AND PERSONS WITH LIMITED MOBILITY



AUTOMATIC HYGIENIC FLUSH POSSIBILITY OF ACTIVATION BY TAPS AND SHOWERS AS THE PREVENTION AGAINST LEGIONELLA BACTERIA



ECONOMICAL AERATOR, RATE OF FLOW 6 L/MIN, ASSURES CONSIDERABLE SAVING OF WATER



PRODUCT SUITABLE FOR HEALTH CARE FACILITIES



LEAD-FREE TECHNOLOGY MEETS THE STRICT STANDARDS FOR DRINKING WATER DISTRIBUTION, WHICH IS THANKS TO ITS EASY RECYCLABILITY ALSO VERY ENVIRONMENTALLY FRIENDLY



SETTING PARAMETERS BY BLUETOOTH WITHOUT DISASSEMBLING THE DEVICE (SANELA CONTROL APP AVAILABLE FOR DOWNLOAD)



EXTENDED 5 YEARS GUARANTEE PERIOD FOR SANELA ELECTRONICS



ECO SYSTEM



WATER SAVING



ENERGY SAVING

SANITARY CABINS AND PARTITIONS

SLKA 01W

• **FOR DRY AREAS** (toilets, changing rooms)

• chipboard th. 18 mm, 25 mm

• metal parts - stainless steel AISI 304

• structural parts made of Aluminium profiles

• stainless steel self-closing hinges



SLKA 01S

• **FOR WET AREAS** (showers)

• HPL laminate th. 12 mm

• metal parts - stainless steel AISI 304

• structural parts made of Aluminium profiles

• stainless steel self-closing hinges



send inquiries to e-mail:
sanela@sanela.cz | www.sanela.eu



SANELA spol. s r.o.
Dukelských hrdinů 989 • 563 01 Lanškroun
tel.: +420 465 350 770-1
e-mail: sanela@sanela.cz
www.sanela.eu



EN ISO 9001:2015